

# Our Learning Brain

---

## Brain Friendly Classroom for Effective Teaching



**M. Nazmul Haq**  
**Professor, IER**  
**University of Dhaka**



# **The Human Brain**

FRONTAL

L  
E  
F  
T



R  
I  
G  
H  
T

OCCIPITAL

## **The two brains**

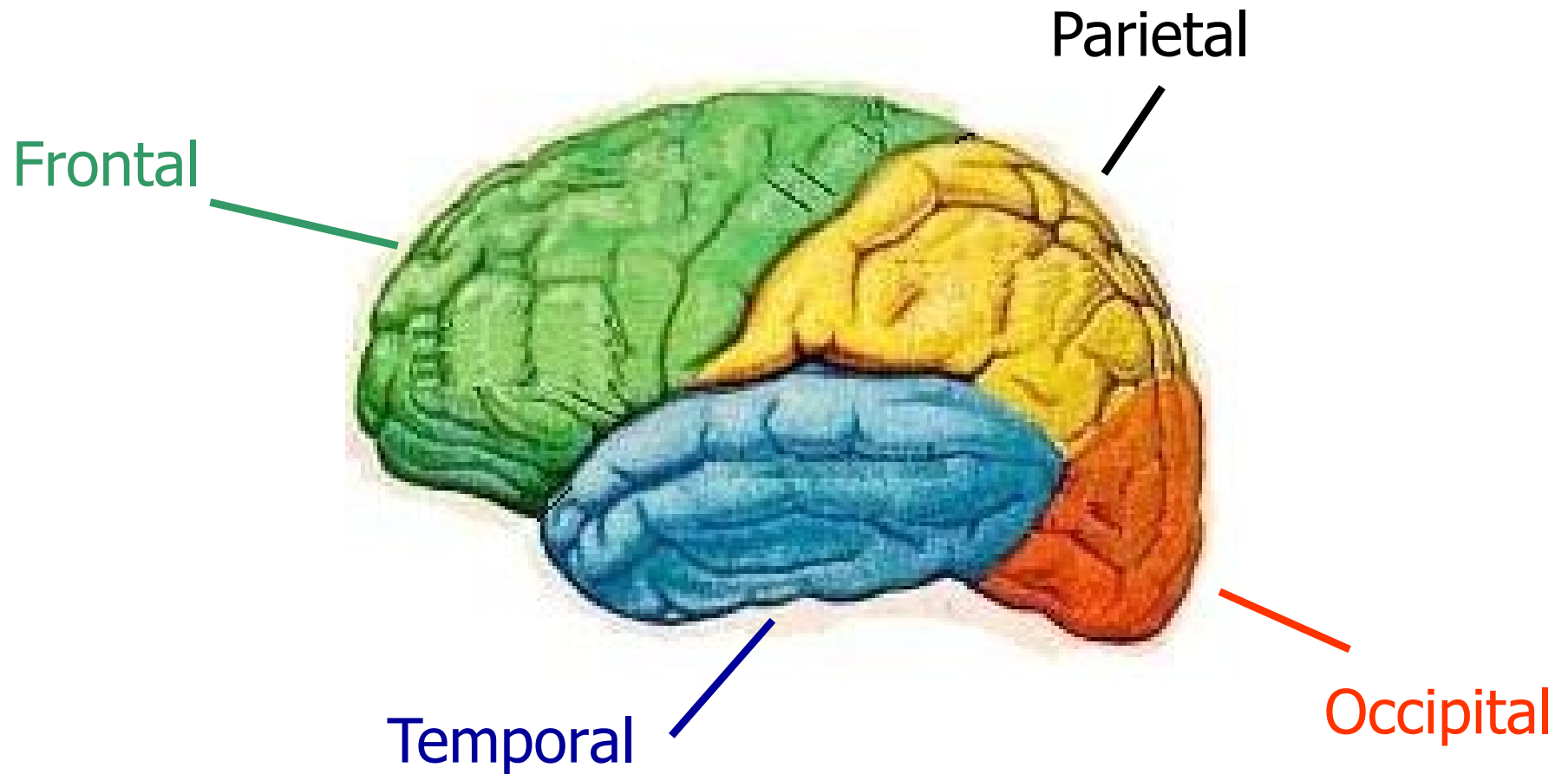
- The left and right sides of the brain serve distinct functions though structurally they are similar.
- Left brain – speech, mathematics, logical problem solving.
- Right brain – visual motor skills, fine arts, music and creativity.

# Our Learning Brain

---

## Structure of the brain

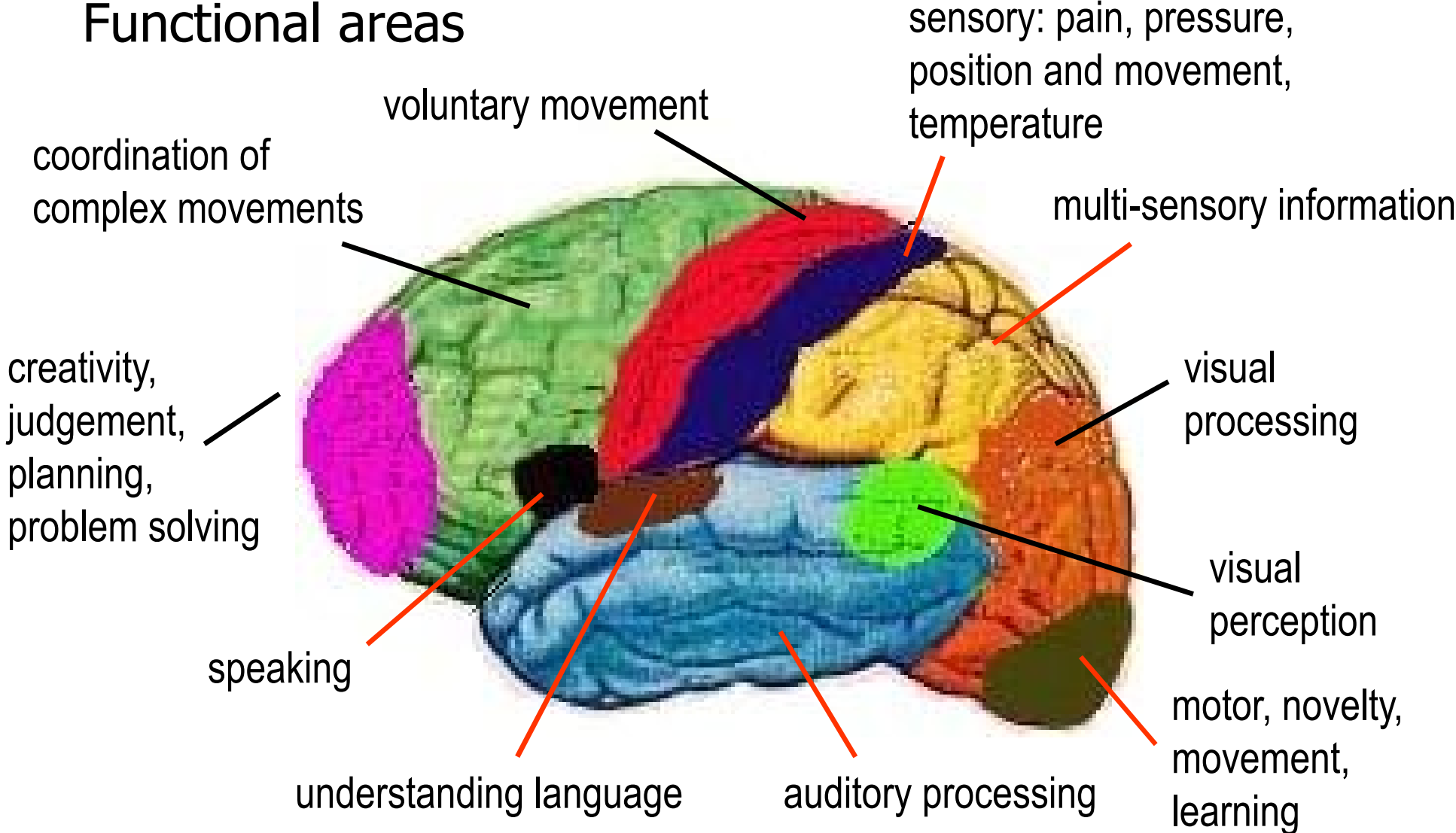
### Lobes



# Our Learning Brain

## Structure of the brain

### Functional areas



# Our Learning Brain

---

## Facts

- ✓ 2% of adult body weight
- ✓ consumes 20% of body's energy
- ✓ gets energy from blood, water
- ✓ uses 35 litres of blood per hour
- ✓ uses 8-12 glasses of water per day, dehydration - lethargy, impaired learning
- ✓ uses one-fifth of body's oxygen, shortage - fatigue



# Our Learning Brain

---

## Facts

- ✓ 78 % – water, 10% fat, 8% protein
- ✓ Two kinds of brain cells
  - glia – 90 %
  - neurons – 10%
- ✓ Glial cells: 1'000 billion, structural support, transport of nutrients, remove dead cells
- ✓ Neurons: 100 billion, makes brain thinking, learning organ



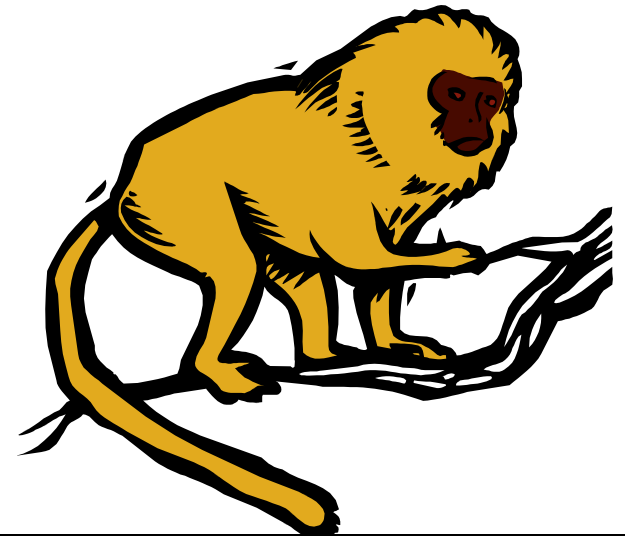


# Our Learning Brain

---

## The Neuron

- ✓ Man – 100 billion neurons
- ✓ Monkey – 10 billion neurons
- ✓ Mouse – 5 million neurons
- ✓ Fruit fly – 100'000 neurons



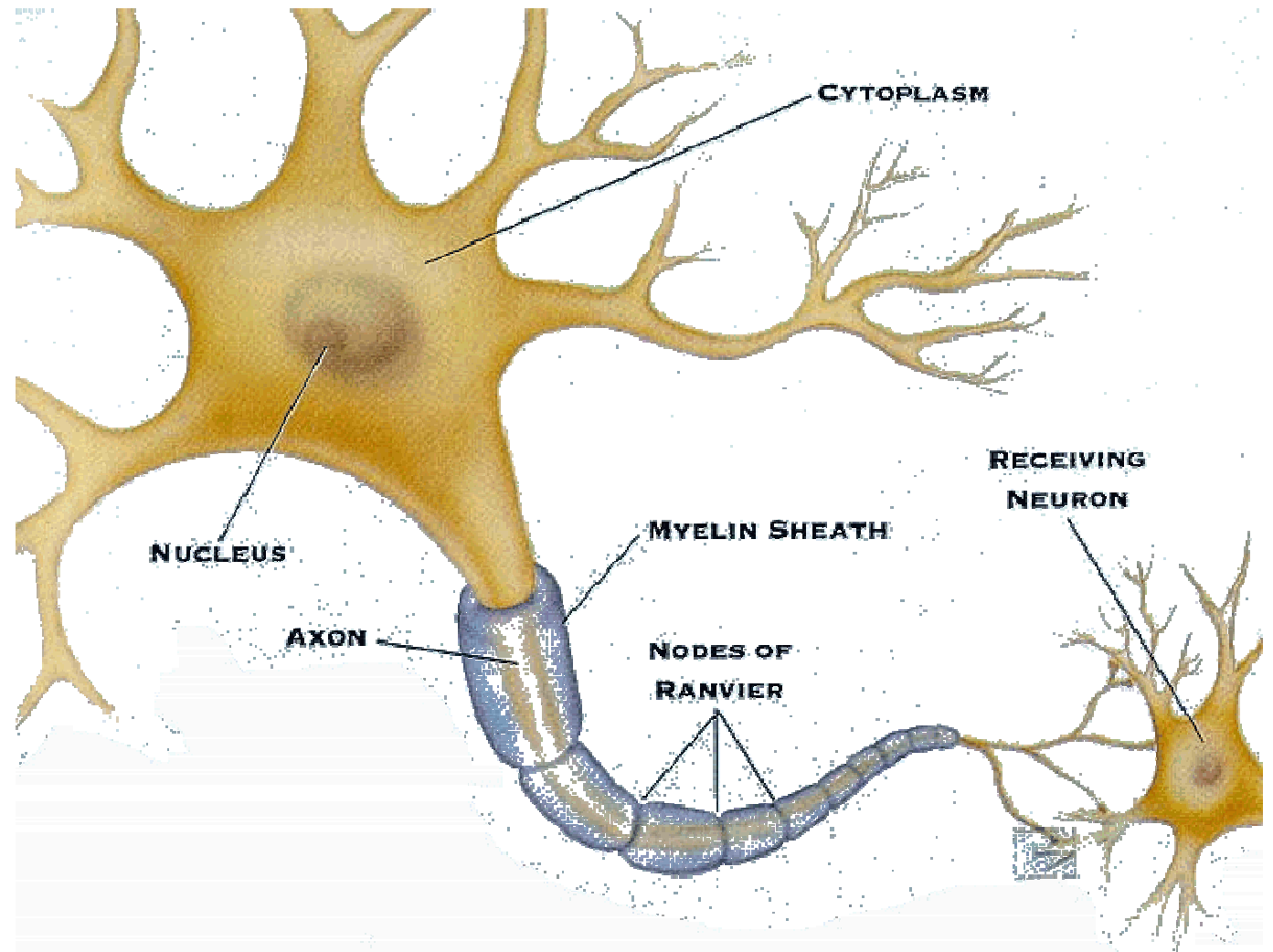
# Our Learning Brain

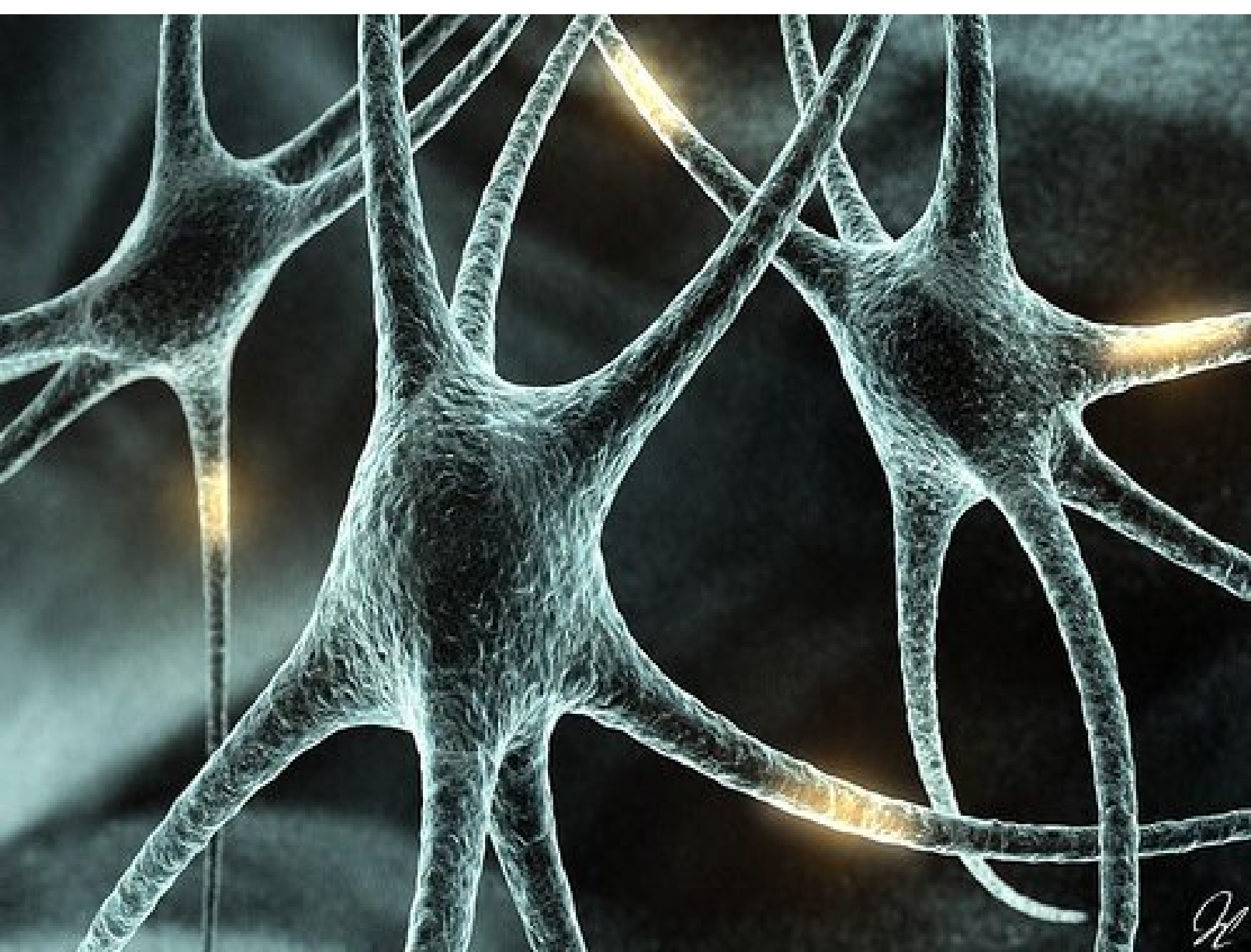
## The Neuron

Cell body

Axon

Dendrites





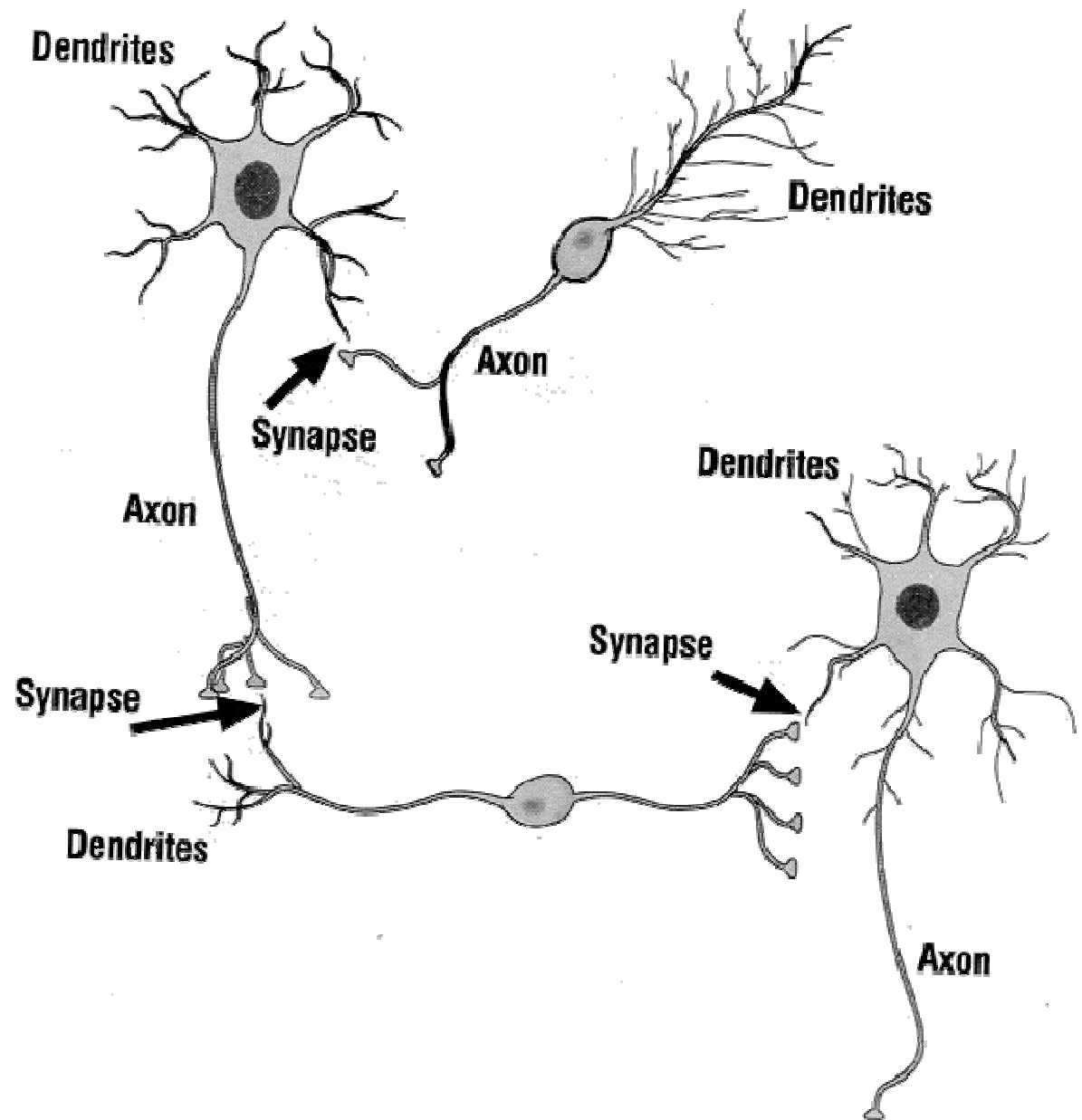
# Our Learning Brain

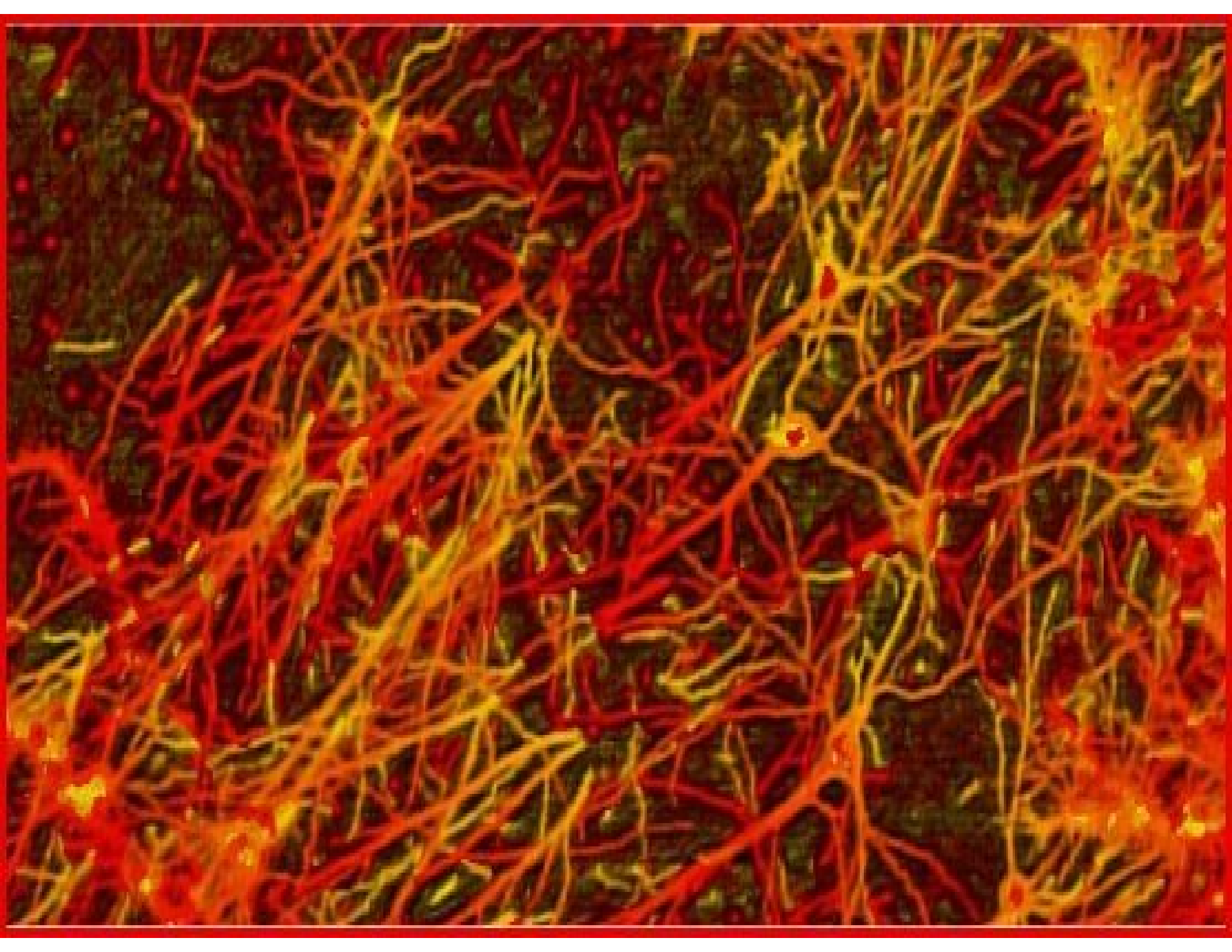
## Neuron Network

Created by connections

Synapse

electrical impulse at axon end releases chemicals - received by dendrites, triggers electrical impulse



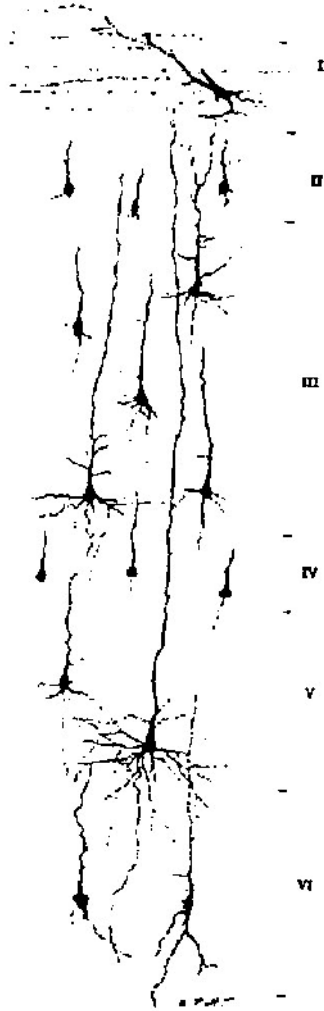


# Our Learning Brain

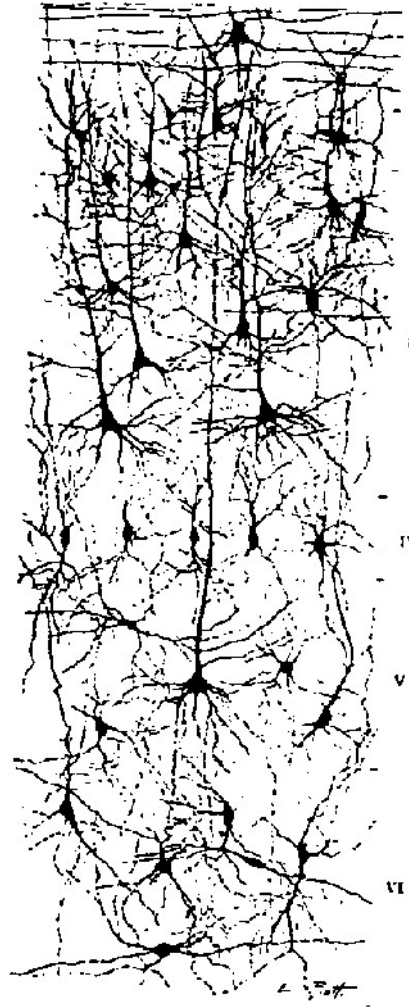
---

## Neuron Network

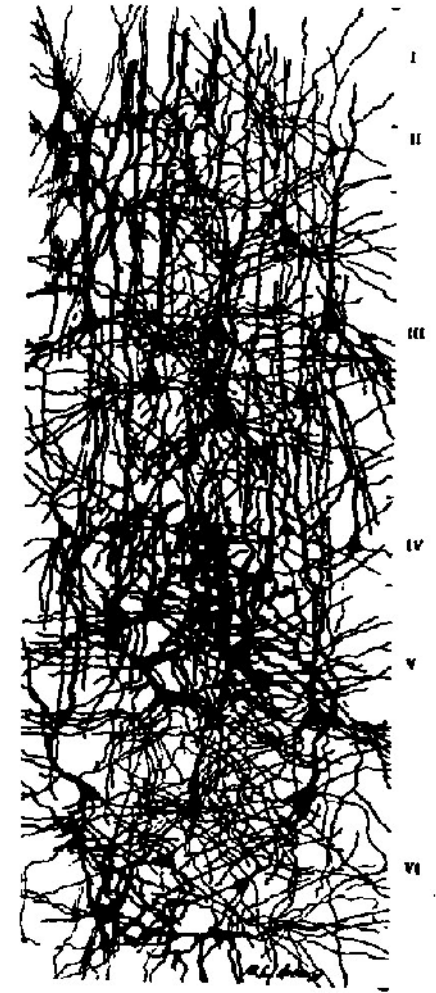
at birth



3 months



24 months

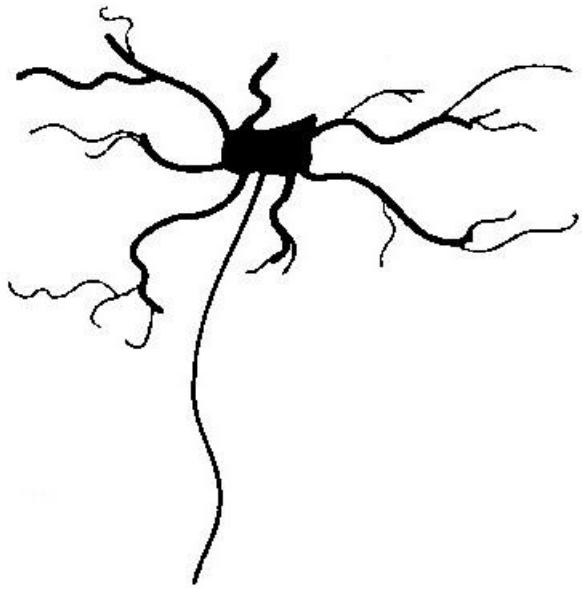


# Our Learning Brain

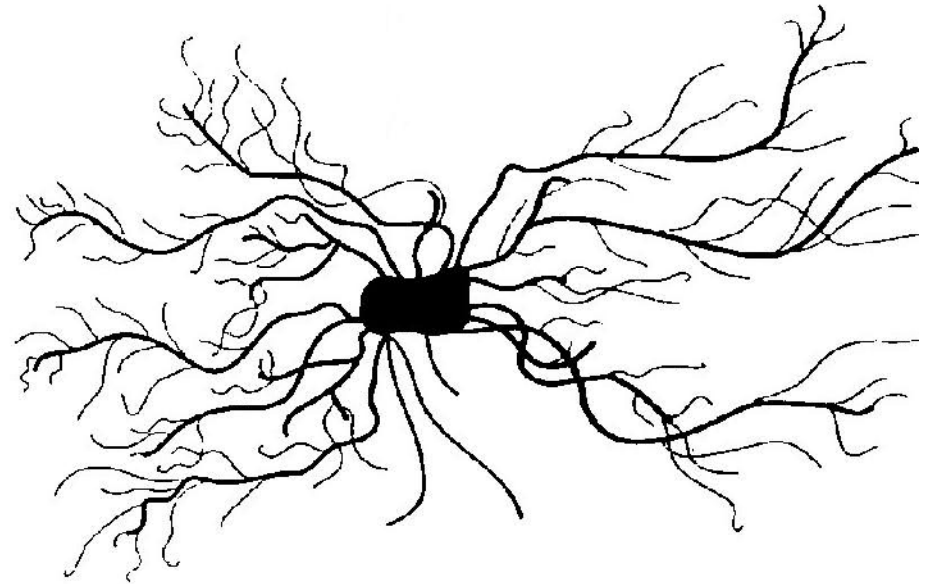
---

## Neuron Network

impact of enriched environment



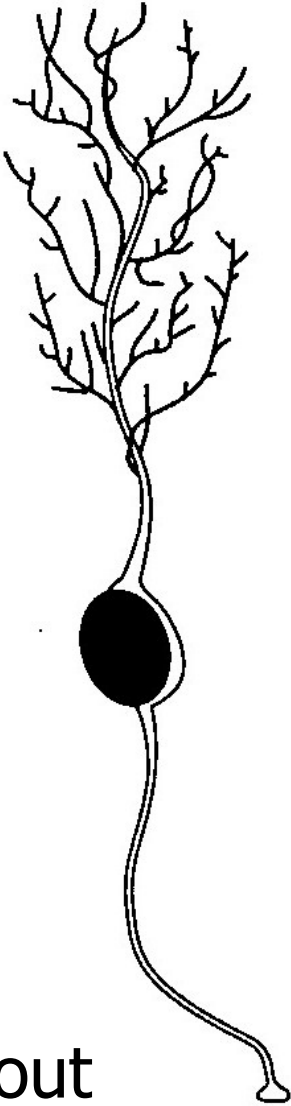
impoverished



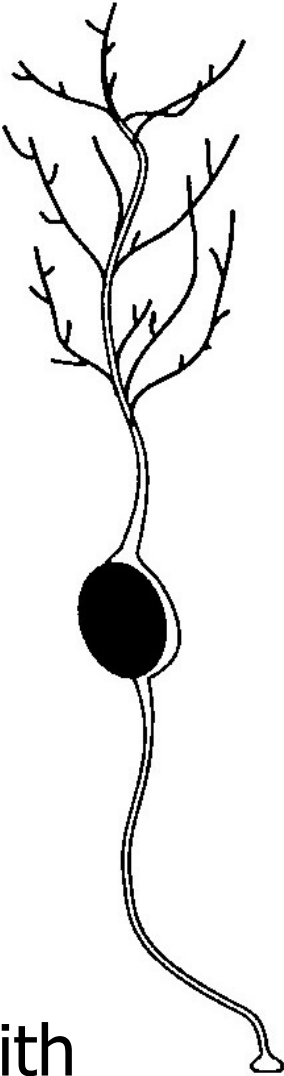
enriched

# Our Learning Brain

Neuron Network  
impact of stress



without stress



with stress



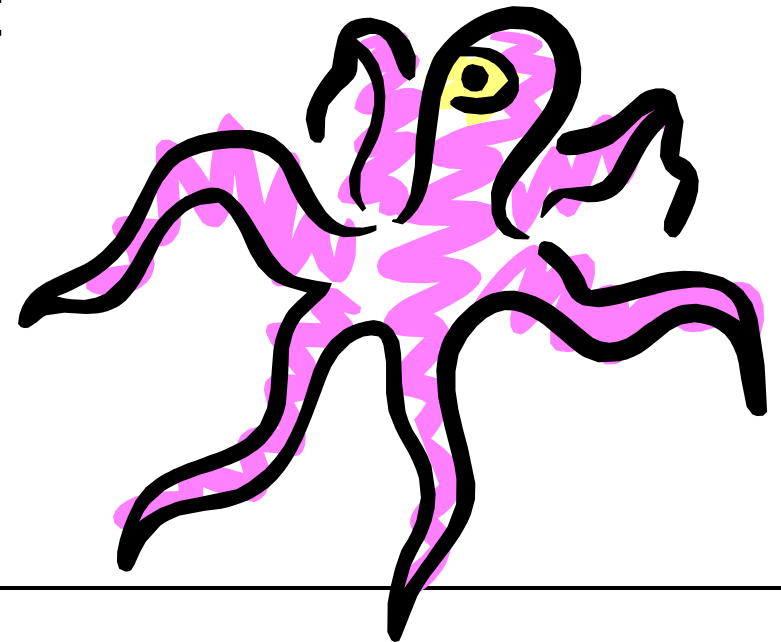
# Our Learning Brain

---

## Neuron Network

conditions to improve neuron network

- Level of oxygen
- Level of water
- Existence of dopamine
- Threat free environment
- Bodily movement
- Rest for the brain

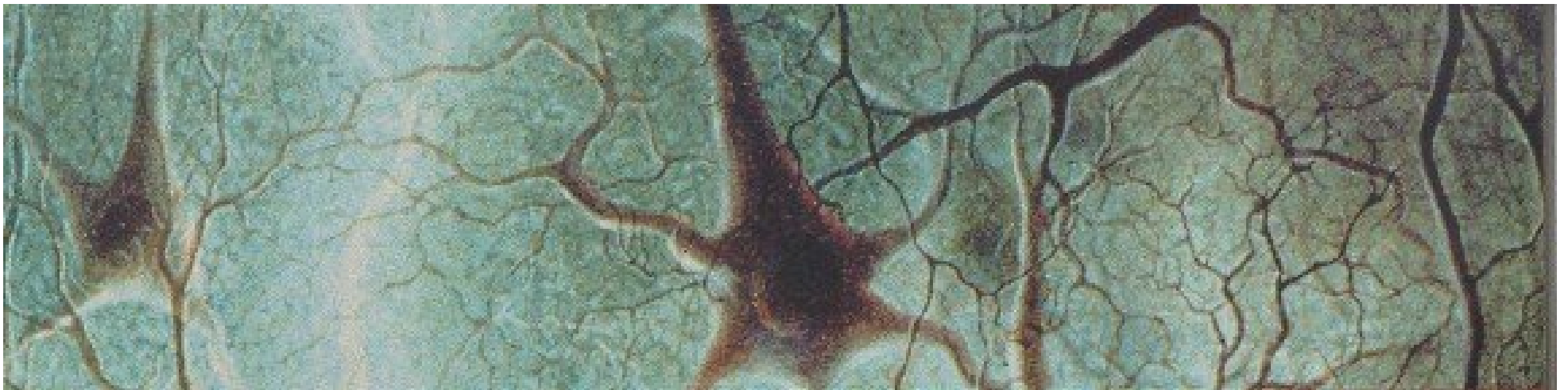


# Our Learning Brain

---

## Learning

How smoothly we can facilitate transmission of electrical impulses and establish network among neurons



# Our Learning Brain

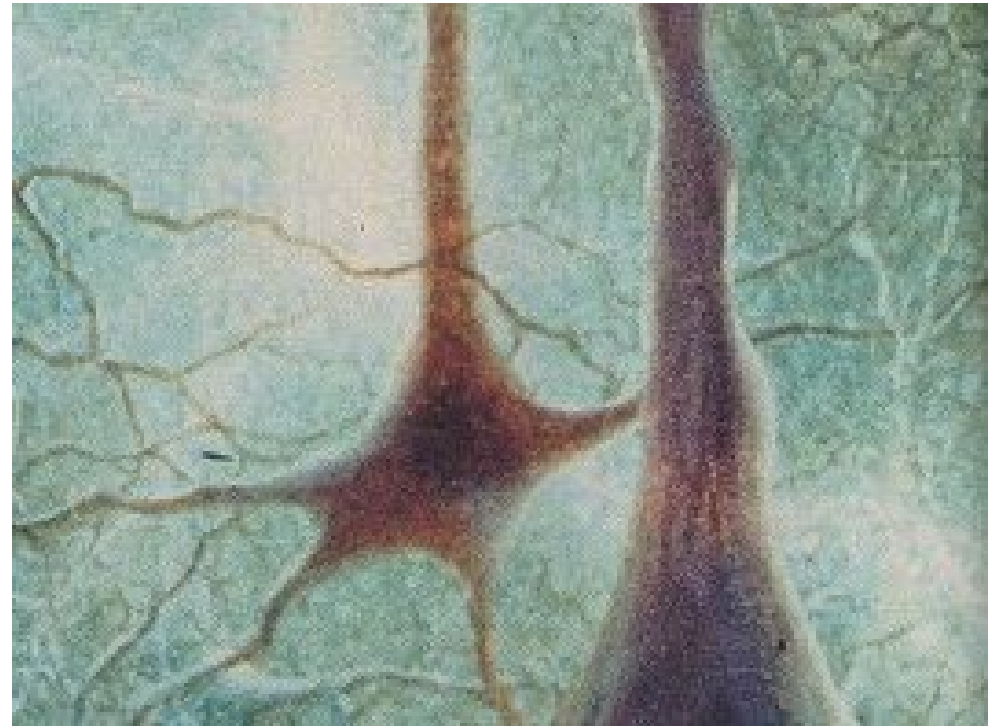
---

## Learning

tremendous amount of information received -  
processing is done unconsciously, long after input is  
received

learning has to 'imprint' -  
need time to reflect on  
learnt material

meaning is generated  
from within

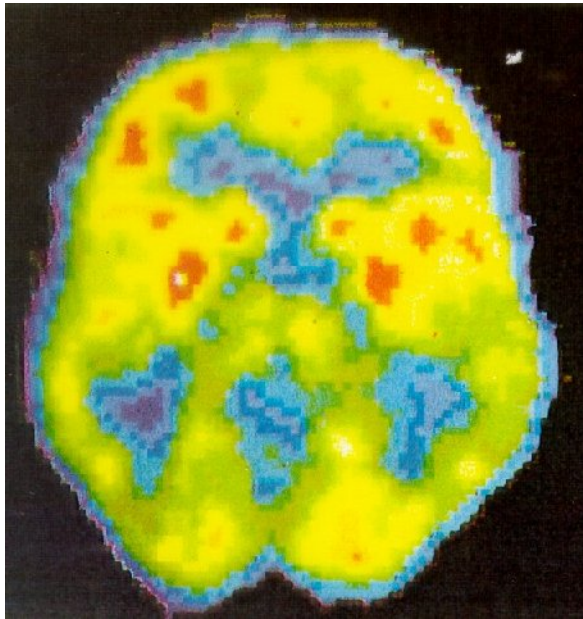


# Our Learning Brain

---

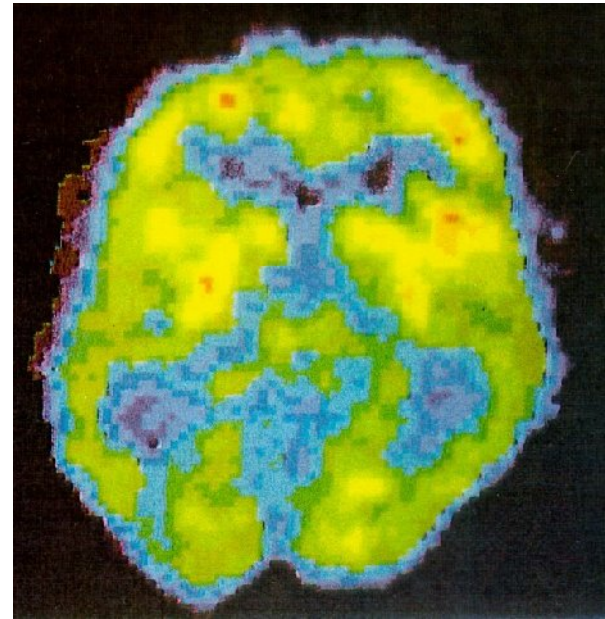
## Learning and brain activity

### Brain MRI (Magnetic Resonance Imaging)



Novice brain

Learning mode –  
more energy is used



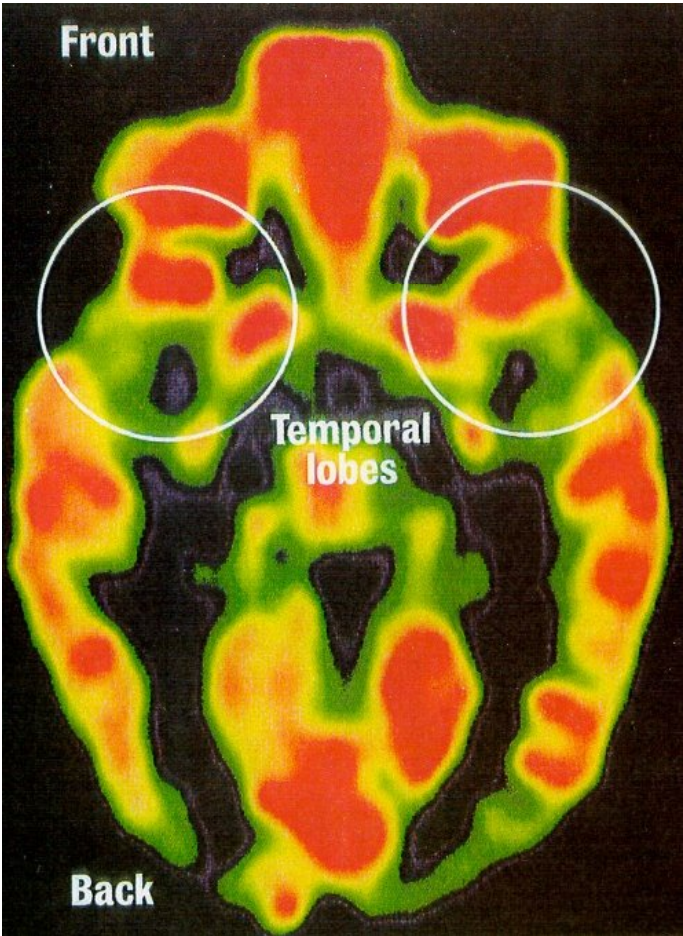
Experienced brain

No further energy is  
used

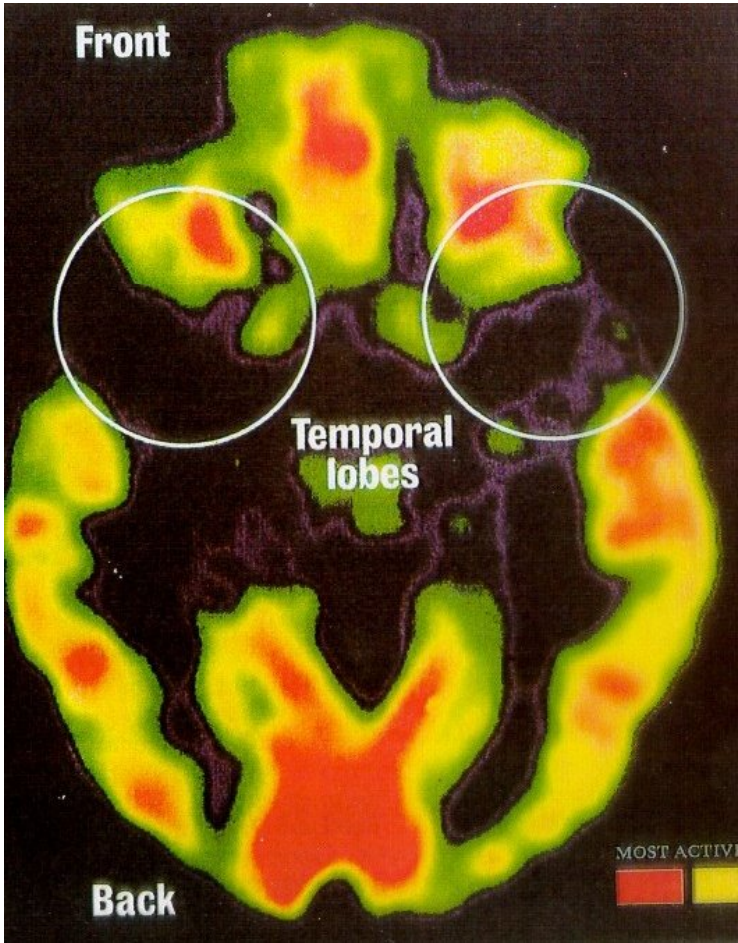
# Our Learning Brain

## Learning and brain activity

Healthy brain



Impoverished brain



# Our Learning Brain

---

## Brain friendly environment

airy, well illuminated room

sufficient space to move

lot of materials to work with

colourful environment

friendly teacher

non-threatening environment



# Our Learning Brain

---

## Brain friendly environment

challenging work

providing feedback

multiple exercises

varieties of teaching modes –  
individual / group

rest for the brain



# Our Learning Brain

---

**Now ask yourself:**

**How shall I enhance my teaching capability  
by using this new knowledge ?**

**Thank You**